

Prepared Rhythms

Practice the following rhythms for performance in class. Use the Longy rhythm method, conduct the meter, and (or) tap the subdivisions of the beat as directed by your instructor.

PR-1

PR-2

PR-3

PR-4

PR-5

PR-6

PR-7

PR-8

PR-9

PR-9 is a rhythmic exercise in 2/4 time, consisting of four staves. The first staff begins with a double bar line and a 2/4 time signature. It contains a sequence of eighth and sixteenth notes with accents. The second staff continues the pattern with similar rhythmic figures. The third staff shows more complex rhythmic combinations, including eighth notes and sixteenth notes. The fourth staff concludes the exercise with a final rhythmic phrase and a double bar line.

PR-10

PR-10 is a rhythmic exercise in 2/4 time, consisting of three staves. The first staff starts with a double bar line and a 2/4 time signature, featuring eighth notes and sixteenth notes. The second staff continues with similar rhythmic patterns, including eighth notes and sixteenth notes. The third staff concludes the exercise with a final rhythmic phrase and a double bar line.

PR-11

PR-11 is a rhythmic exercise in 2/4 time, consisting of three staves. The first staff begins with a double bar line and a 2/4 time signature, featuring eighth notes and sixteenth notes. The second staff continues with similar rhythmic patterns, including eighth notes and sixteenth notes. The third staff concludes the exercise with a final rhythmic phrase and a double bar line.

PR-12

PR-12 is a rhythmic exercise in 3/4 time, consisting of one staff. It begins with a double bar line and a 3/4 time signature, followed by a sequence of eighth notes and sixteenth notes, ending with a double bar line.

PR-13

PR-13 is a rhythmic exercise in 3/4 time, consisting of one staff. It begins with a double bar line and a 3/4 time signature, followed by a sequence of eighth notes and sixteenth notes, ending with a double bar line.

PR-14

PR-14 is a rhythmic exercise in 3/4 time, consisting of one staff. It begins with a double bar line and a 3/4 time signature, followed by a sequence of eighth notes and sixteenth notes, ending with a double bar line.

PR-15

Two staves of music in 3/4 time. The first staff contains a sequence of eighth and quarter notes with various rests. The second staff contains a sequence of eighth and quarter notes, some beamed together, with various rests.

PR-16

Two staves of music in 3/4 time. Both staves feature a continuous eighth-note pattern with various rests and ties.

PR-17

Two staves of music in 4/4 time. The first staff has a sequence of eighth and quarter notes with rests. The second staff has a sequence of eighth and quarter notes with rests.

PR-18

Two staves of music in 4/4 time. The first staff has a sequence of eighth and quarter notes with rests. The second staff has a sequence of eighth and quarter notes with rests.

PR-19

Two staves of music in 4/4 time. The first staff has a sequence of eighth and quarter notes with rests. The second staff has a sequence of eighth and quarter notes with rests.

PR-20

Two staves of music in 4/4 time. The first staff features eighth-note patterns with triplets indicated by a '3' below the notes. The second staff features eighth-note patterns with triplets indicated by a '3' above the notes.

PR-21

Two staves of music in 6/8 time. The first staff has a sequence of eighth and quarter notes with rests. The second staff has a sequence of eighth and quarter notes with rests.

PR-22

Two staves of music in 6/8 time. The first staff has a sequence of eighth and quarter notes with rests. The second staff has a sequence of eighth and quarter notes with rests.

PR-23

Two staves of music in 6/8 time. The first staff has a sequence of eighth and quarter notes with rests. The second staff has a sequence of eighth and quarter notes with rests.

PR-24



PR-25



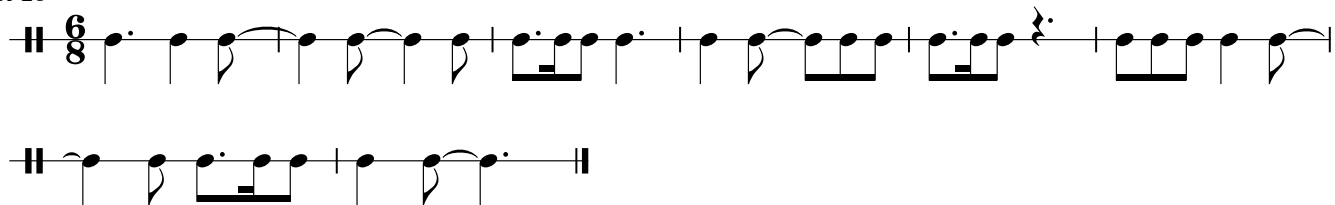
PR-26



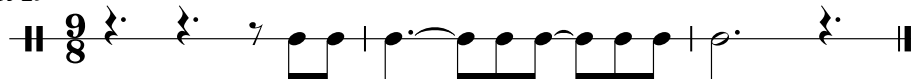
PR-27



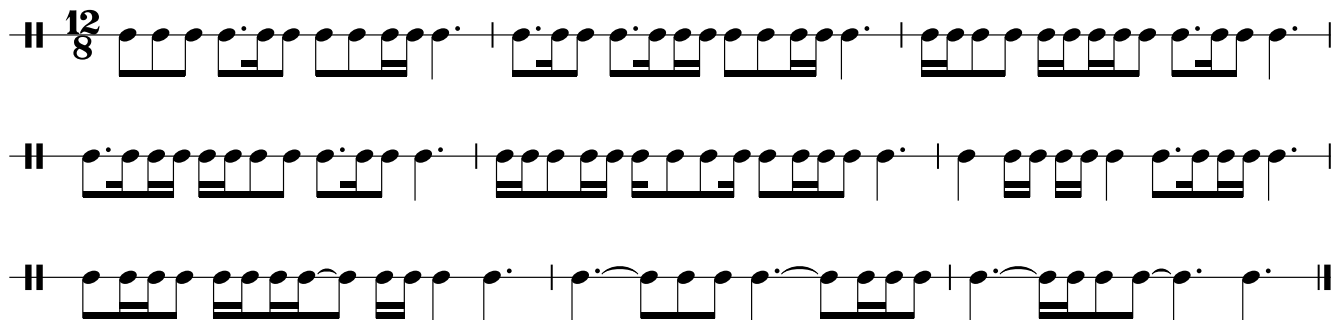
PR-28



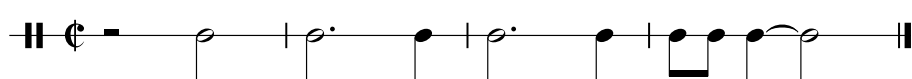
PR-29



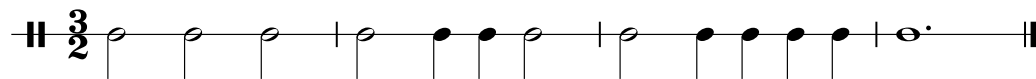
PR-30



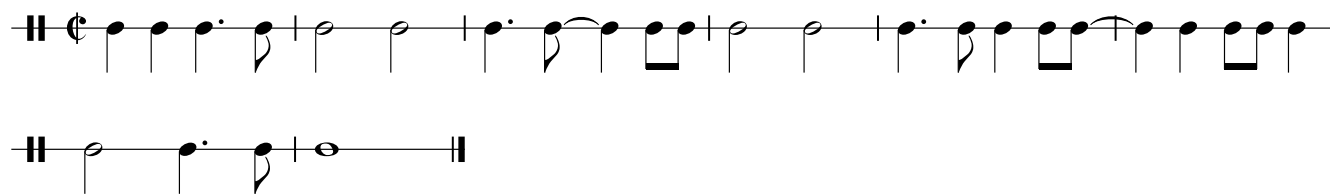
PR-31



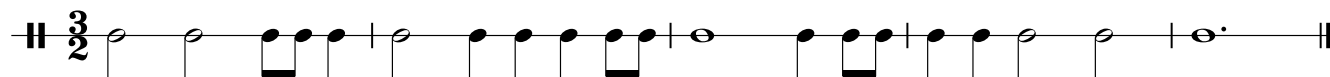
PR-32



PR-33



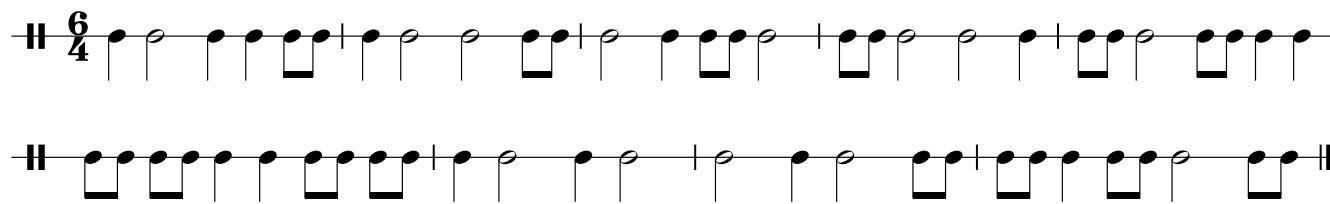
PR-34



PR-35



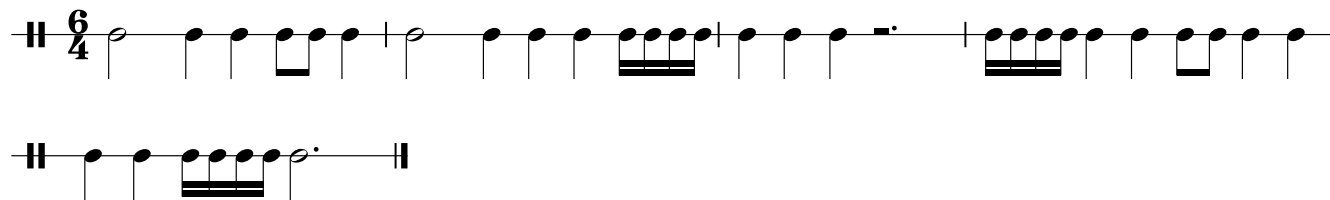
PR-36



PR-37



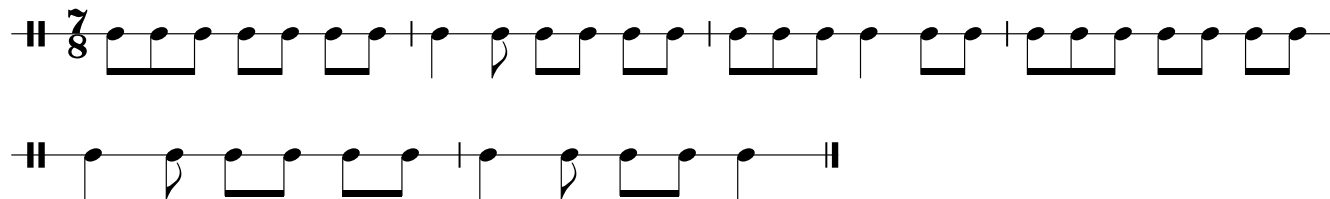
PR-38



PR-39



PR-40



PR-41

PR-41 is a rhythmic exercise in 3/4 time. It consists of two systems of two staves each. The first system contains four measures. The second system contains four measures. The notation includes eighth notes, quarter notes, and quarter rests, with various phrasing slurs and accents.

PR-42

PR-42 is a rhythmic exercise in 4/4 time. It consists of two systems of two staves each. The first system contains four measures. The second system contains four measures. The notation includes eighth notes, quarter notes, and quarter rests, with various phrasing slurs and accents. Triplet markings (3) are present in several measures.


PR-43

PR-43 is a rhythmic exercise in 6/8 time. It consists of two systems of two staves each. The first system contains four measures. The second system contains four measures. The notation includes eighth notes, quarter notes, and quarter rests, with various phrasing slurs and accents.

PR-44

PR-44 is a rhythmic exercise in 5/8 time. It consists of two systems of two staves each. The first system contains four measures. The second system contains four measures. The notation includes eighth notes, quarter notes, and quarter rests, with various phrasing slurs and accents.

PM - 1



Musical staff for PM-1, 4/4 time signature, treble clef. The melody consists of eighth and quarter notes.

5



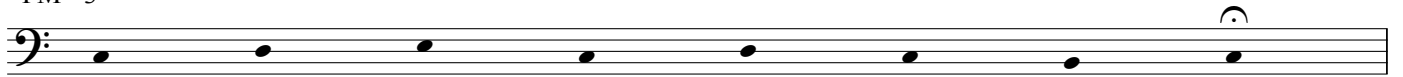
Musical staff for PM-1, measure 5, treble clef. The melody continues with eighth and quarter notes.

PM - 2



Musical staff for PM-2, 6/8 time signature, treble clef. The melody consists of eighth and quarter notes.

PM - 3



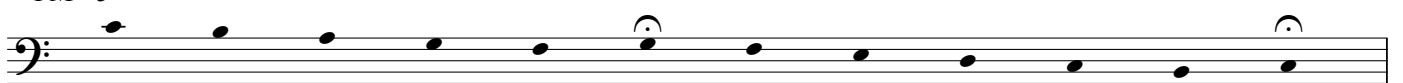
Musical staff for PM-3, bass clef. The melody consists of quarter notes.

PM - 4



Musical staff for PM-4, bass clef. The melody consists of quarter notes.

PM - 5



Musical staff for PM-5, bass clef. The melody consists of quarter notes.

PM - 6

Andante

C. Gluck, Orpheus



Musical staff for PM-6, measure 1, common time signature, treble clef. The melody consists of quarter and eighth notes.

7



Musical staff for PM-6, measure 7, treble clef. The melody continues with quarter and eighth notes.

13



Musical staff for PM-6, measure 13, treble clef. The melody continues with quarter and eighth notes.

19



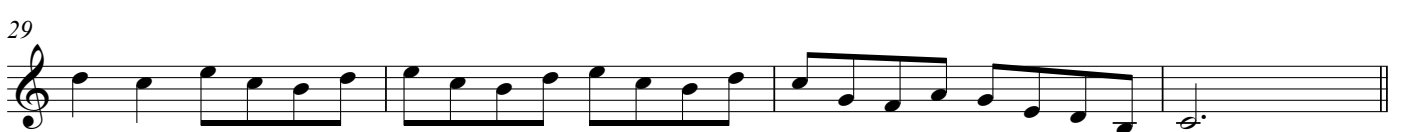
Musical staff for PM-6, measure 19, treble clef. The melody continues with quarter and eighth notes.

25



Musical staff for PM-6, measure 25, treble clef. The melody continues with quarter and eighth notes.

29



Musical staff for PM-6, measure 29, treble clef. The melody continues with quarter and eighth notes.

PM - 7



PM - 8

Romm



PM - 9



PM - 10



PM - 11

F. Schubert, Rain of Tears

Largo

Musical score for PM-11, F. Schubert's 'Rain of Tears'. The piece is in 6/8 time and G major. It consists of three staves of music. The first staff starts at measure 1 and ends at measure 7. The second staff starts at measure 8 and ends at measure 13. The third staff starts at measure 14 and ends at measure 19. The melody is characterized by a slow, flowing eighth-note pattern.

PM - 12

Musical score for PM-12. The piece is in common time (C) and G major. It consists of two staves of music. The first staff starts at measure 1 and ends at measure 4. The second staff starts at measure 5 and ends at measure 8. The melody is a simple, steady eighth-note pattern.

PM - 13

Musical score for PM-13. The piece is in 2/4 time and G major. It consists of one staff of music starting at measure 1 and ending at measure 8. The melody is a simple eighth-note pattern.

PM - 14

J.S. Bach, Polonaise

Moderato

Musical score for PM-14, J.S. Bach's Polonaise. The piece is in 3/4 time and G major. It consists of three staves of music. The first staff starts at measure 1 and ends at measure 4. The second staff starts at measure 5 and ends at measure 10. The third staff starts at measure 11 and ends at measure 16. The melody is a simple eighth-note pattern.

PM - 15

Musical score for PM-15. The piece is in 9/8 time and G major. It consists of two staves of music. The first staff starts at measure 1 and ends at measure 3. The second staff starts at measure 4 and ends at measure 6. The melody is a simple eighth-note pattern.

PM - 16

Romm

PM - 17

PM - 18

PM - 19

Alla marcia

England

PM - 20

Vivace

England (17th Century)

PM - 21

PM - 22

Beethoven

Allegro



PM - 23

Beethoven

Andante cantabile



PM - 24

England

Allegretto



PM - 25



PM - 26

Romm



PM - 27

Schubert

5

PM - 28

Bach

PM - 29

PM - 30

6

D.C. al Fine

Fine

PM - 31

4

PM - 32

France

8

PM - 33

G. F. Handel, Minuet



PM - 34

**Fine****D.C. al Fine**

PM - 35



PM - 36



PM - 37

Musical score for PM - 37, measures 1-10. The piece is in treble clef, key of D major (two sharps), and common time (C). Measures 1-2 contain a quarter note D4, followed by eighth notes E4, F4, G4, A4, B4, C5. Measure 3 has a triplet of eighth notes G4, A4, B4. Measures 4-5 continue with eighth notes C5, B4, A4, G4, F4, E4. Measure 6 has a quarter note D4, followed by eighth notes E4, F4, G4, A4, B4, C5. Measure 7 has a triplet of eighth notes G4, A4, B4. Measures 8-9 continue with eighth notes C5, B4, A4, G4, F4, E4. Measure 10 ends with a quarter note D4 and a whole rest.

PM - 38

Musical score for PM - 38, measures 1-9. The piece is in bass clef, key of D major (two sharps), and 3/4 time. Measures 1-2 contain quarter notes D3, E3, F3, G3, A3, B3. Measure 3 has a quarter note C4, followed by eighth notes D4, E4, F4, G4, A4, B4. Measure 4 has a quarter note G4, followed by eighth notes F4, E4, D4, C4, B3, A3. Measure 5 has a quarter note G3, followed by eighth notes F3, E3, D3, C3, B2, A2. Measure 6 has a quarter note G2, followed by eighth notes F2, E2, D2, C2, B1, A1. Measure 7 has a quarter note G1, followed by eighth notes F1, E1, D1, C1, B0, A0. Measure 8 has a quarter note G0, followed by eighth notes F0, E0, D0, C0, B-1, A-1. Measure 9 ends with a quarter note G-1 and a whole rest.

PM - 39

Musical score for PM - 39, measures 1-11. The piece is in bass clef, key of D major (two sharps), and 3/4 time. Measures 1-2 contain eighth notes D3, E3, F3, G3, A3, B3. Measure 3 has a quarter note C4, followed by eighth notes D4, E4, F4, G4, A4, B4. Measure 4 has a quarter note G4, followed by eighth notes F4, E4, D4, C4, B3, A3. Measure 5 has a quarter note G3, followed by eighth notes F3, E3, D3, C3, B2, A2. Measure 6 has a quarter note G2, followed by eighth notes F2, E2, D2, C2, B1, A1. Measure 7 has a quarter note G1, followed by eighth notes F1, E1, D1, C1, B0, A0. Measure 8 has a quarter note G0, followed by eighth notes F0, E0, D0, C0, B-1, A-1. Measure 9 has a quarter note G-1, followed by eighth notes F-1, E-1, D-1, C-1, B-2, A-2. Measure 10 has a quarter note G-2, followed by eighth notes F-2, E-2, D-2, C-2, B-3, A-3. Measure 11 ends with a quarter note G-3 and a whole rest.

PM - 40

England

Musical score for PM - 40, measures 1-9. The piece is in treble clef, key of D major (two sharps), and 3/4 time. The tempo/mood is **Pensively**. Measures 1-2 contain quarter notes D4, E4, F4, G4, A4, B4. Measure 3 has a quarter note C5, followed by eighth notes B4, A4, G4, F4, E4, D4. Measure 4 has a quarter note C4, followed by eighth notes D4, E4, F4, G4, A4, B4. Measure 5 has a quarter note G4, followed by eighth notes F4, E4, D4, C4, B3, A3. Measure 6 has a quarter note G3, followed by eighth notes F3, E3, D3, C3, B2, A2. Measure 7 has a quarter note G2, followed by eighth notes F2, E2, D2, C2, B1, A1. Measure 8 has a quarter note G1, followed by eighth notes F1, E1, D1, C1, B0, A0. Measure 9 ends with a quarter note G0 and a whole rest.

PM - 41

Musical notation for PM - 41, first staff. Treble clef, key signature of two sharps (F# and C#), 3/4 time signature. The melody consists of eighth and quarter notes.

9

Musical notation for PM - 41, second staff. Treble clef, key signature of two sharps (F# and C#), 3/4 time signature. The melody continues with eighth and quarter notes.

PM - 42

Allegro

American Folk Song

Musical notation for PM - 42, first staff. Bass clef, key signature of two sharps (F# and C#), 2/4 time signature. The melody consists of eighth and quarter notes.

7

Musical notation for PM - 42, second staff. Bass clef, key signature of two sharps (F# and C#), 2/4 time signature. The melody continues with eighth and quarter notes.

PM - 43

Adagio

Wagner

Musical notation for PM - 43, first staff. Treble clef, key signature of three flats (Bb, Eb, Ab), common time signature. The melody features triplets of eighth notes.

6

Musical notation for PM - 43, second staff. Treble clef, key signature of three flats (Bb, Eb, Ab), common time signature. The melody continues with triplets of eighth notes.

9

Musical notation for PM - 43, third staff. Treble clef, key signature of three flats (Bb, Eb, Ab), common time signature. The melody continues with triplets of eighth notes.

PM - 44

Musical notation for PM - 44, first staff. Treble clef, key signature of three flats (Bb, Eb, Ab), 4/4 time signature. The melody consists of quarter and eighth notes.

7

Musical notation for PM - 44, second staff. Treble clef, key signature of three flats (Bb, Eb, Ab), 4/4 time signature. The melody continues with quarter and eighth notes.

PM - 45

9

PM - 46

$\text{♩} = 138$

Basque Carol

6

PM - 47

5

Fine
D.C. al Fine

PM - 48

PM - 49

7

PM - 50

4

PM - 51

Scarlatti



PM - 52

Sempre legato

Donizetti



PM - 53



PM - 54



PM - 55

8

PM - 56

Allegretto mosso

Rimsky-Korsakov

8

12

PM - 57

8

PM - 58

PM - 59

PM - 60

8

PM - 61



PM - 62



PM - 63



PM - 64

♩ = 60

L. Cherubini



PM - 65



PM - 66

5

Musical notation for PM - 66, measures 1-5. The piece is in bass clef, 4/4 time, and E-flat major. It consists of five measures of music.

PM - 67

9

14

Musical notation for PM - 67, measures 1-14. The piece is in bass clef, 6/8 time, and E-flat major. It consists of 14 measures of music.

PM - 68

Moderato Laujon

8

Musical notation for PM - 68, measures 1-8. The piece is in bass clef, 2/2 time, and E major. It consists of 8 measures of music.

PM - 69

Mendelssohn

6

Musical notation for PM - 69, measures 1-6. The piece is in bass clef, common time, and E major. It consists of 6 measures of music.

PM - 70

5

10

Fine D.C. al Fine

Musical notation for PM - 70, measures 1-10. The piece is in bass clef, 2/4 time, and E major. It consists of 10 measures of music, ending with a double bar line and repeat sign.

PM - 71

96

Musical notation for PM - 71, measures 1-5. The piece is in 6/8 time with a key signature of three sharps (F#, C#, G#). The melody consists of eighth and sixteenth notes, with some slurs and a fermata at the end of measure 5.

PM - 72

Schumann

Musical notation for PM - 72, measures 1-5. The piece is in 6/8 time with a key signature of three sharps (F#, C#, G#). The melody features eighth and sixteenth notes, with some slurs and a fermata at the end of measure 5.

PM - 73

$\text{♩} = 76$

Germany

Musical notation for PM - 73, measures 1-5. The piece is in 6/8 time with a key signature of three flats (Bb, Eb, Ab). The tempo is marked as quarter note = 76. The melody consists of eighth and sixteenth notes, with a repeat sign and a fermata at the end of measure 5.

PM - 74

Allegro

Brahms

Musical notation for PM - 74, measures 1-5. The piece is in 3/4 time with a key signature of three flats (Bb, Eb, Ab). The tempo is marked as **Allegro**. The melody consists of eighth and sixteenth notes, with a fermata at the end of measure 5.

PM - 75

Musical notation for PM - 75, measures 1-5. The piece is in 3/4 time with a key signature of three flats (Bb, Eb, Ab). The melody consists of quarter and eighth notes, with a fermata at the end of measure 5.

PM - 76

$\text{♩} = 84$

England

Musical notation for PM - 76, measures 1-5. The piece is in 4/4 time with a key signature of three flats (Bb, Eb, Ab). The tempo is marked as quarter note = 84. The melody consists of quarter and eighth notes, with a fermata at the end of measure 5.